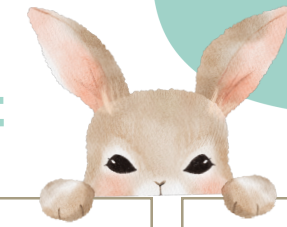


April 2025



Sun

Mon

Tue

Wed

Thu

Fri

Sat

30 Michael Charles Live 6:30pm - 8:30 pm Columbia Valley Centre	31	01	02	03	04 The Piano Men II 5:30pm - 9:30pm Columbia Valley Centre	05
06	07	08	09	10	11	12 Red Bull Slopesoakers 10:00am - 3:30pm Panorama
13 Superhero Slush Showdown 1:00pm - 4:00pm Panorama	14	15	16	17	18 Good Friday Invermere Market 3:00pm - 7:00pm Adult Egg Hunt 5:00pm - 7:30pm Hopkins Harvest	19 Easter Palooza 9:00am - 6:50pm Panorama Invermere Food & Artisan Market 10:00am - 4:00pm
20 Easter Sunday Adult Egg Hunt 3:00pm - 5:00pm Hopkins Harvest	21	22	23	24	25	26
27	28	29	30	01	02	03 Local Line Up Radius Retreat

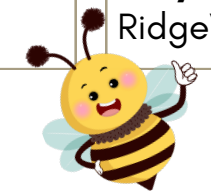
Reoccurring Local Events

- Invermere Film Festival monthly movie night - 1st Tuesday of the month: This month is A Complete Unknown at 7 pm
- Live Music - The Horsethief Creek Pub & Eatery every Sunday evening, 7-9 pm - go early for a seat!
- Poker at The Station Pub - every Monday at 6:30 pm (note- kitchen is closed)
- Trivia at Windermere Whitehouse Pub every Thursday at 7:30pm

~2025 Work Bee

Work Bee is an annual event held every April where our dedicated volunteers come help spruce up the resort for the season ahead!

This year, our **Volunteer Gala** will be on **April 19th**, where we celebrate and thank our volunteers! The **Work Bee Wrap up** will be **April 25th**. On **April 26th** there will be **special tribute to Wayne Holmgren** - the heart of RidgeView Resort. ❤️



Early Season Hikes!

Eager to get out there? We don't blame you! Check out these hikes that you can do early in the season! Always remember to monitor conditions and be prepared to change your plans if you need to. If your feet are sinking into the mud, it can cause trail damage. You can go early in the morning when the ground is still a little frozen, or stay on drier routes to keep the trails AND yourself in great shape!

- **Easy/Moderate - The Johnson**

Distance: 10.3 km loop with lots of options to shorten/lengthen
Right across the road from Lillian Lake, a whole trail network weaves through the trees. Do the whole loop, or shorten it with one of the many trails through out the area. The canyon views are spectacular! There are some steep but short hills throughout.

- **Moderate - Juniper Trail**

Distance: 6 km loop or shorten it with an out and back
This trail leads down to a viewpoint of Sinclair Creek before travelling up the switchbacks of Sinclair Canyon to a view point of the canyon and valley. Return the way you came, or carry on and end at the Radium Hot Springs Pools. You can return via the highway or by Redstreak Campground Trail. Note: National Park Pass required.

- **Moderate/Hard - Swansea Mountain**

Distance: 12km loop or out and back
Start from the large lower parking lot, and follow the hiking trail up. Stop at the lookout tower half way up, or keep going and summit the mountain and take in the views of the entire valley! You can return the way you came, or for a more adventurous decent, take the loop down. For a safe and happy time, stay on the hiking only trails, and always keep an eye out for bikes as this is a downhill mountain bike hot spot!

See us at the desk for more info!

Fun Facts About Spring!

1- The Eiffel Tower Grows in Spring

Incredibly, the Eiffel Tower can expand by up to 6 inches in the warmer temperatures of spring. This is because iron expands when it heats up. Don't worry, it'll shrink back when the weather cools down.



2- Arctic Terns: World Record Holders

Arctic Terns hold the record for the longest migratory journey in the animal kingdom. These birds can fly from the Arctic to the Antarctic and back, covering around 25,000 miles in a single year.

3- Rainbows are Unique to Planet Earth

Earth is the only planet in the solar system where rainbows occur.

4- It's Not Just You: Spring Fever is Real

Spring fever is a biological reality caused by changes in hormones like serotonin, which affects mood and energy levels. For animals, it's a critical period for activities like hunting, mating, and preparing for the challenges of the year ahead. Scientific studies have documented that animals ranging from birds to mammals experience physiological changes that can be described as their version of 'spring fever.'



5- Ladybug Luck

Ladybugs are more active in the spring and are considered good luck. Plus, they help gardeners by eating pests!



RidgeView Resort

The First Wildflowers of Spring

Glacier lily (*Erythronium grandiflorum*)

These are some of the first flowers you will see in the subalpine during snowmelt. They are found scattered throughout subalpine meadows and are a common sight in slide paths. Grizzly bears dig for their hardy bulbous roots soon after emerging from the den.

Sitka valerian (*Valeriana sitchensis*)

When this plant initially comes up in the spring, its shoots are red and its flowers are tinged pink. Later in the season the plant loses this red pigment, called anthocyanin. The red pigment helps to protect the plant by blocking some UV radiation and it also warms the plant by absorbing more infrared radiation. When the subalpine experiences its first fall frost, valerian gives off a skunk-like, sour odour that is evident when you are walking through the meadows.

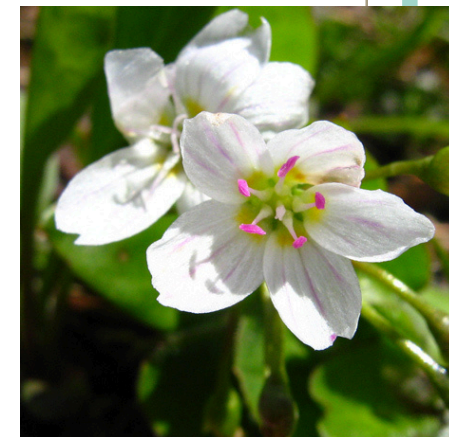


Prairie Crocus (*Pulsatilla nuttalliana*)

This wildflower is a welcome sight when it appears in the early spring. On sunny southern slopes, flowers often appear just as the snows retreat. Soft purple blooms turn to fluffy seed heads that linger into the summer and have an extended presence in the garden. Prairie Crocus is a slow-growing species that can disappear completely by late summer when small. It's in the buttercup family, so isn't a Crocus at all, and has an alternate name, Pasque Flower.

Spring beauty (*Clatoynia lanceolata*)

Spring beauty is a spring ephemeral - it comes up as soon as the snow melts and within 2-4 weeks it blooms, produces seeds and stores enough energy for the following spring. It can even use its energy reserves to produce heat and melt through the last of the snow. This early and quick life-cycle allows it to avoid competing for sunlight with the larger, leafier plants. Spring beauty is an early season food source for grizzly bears, like glacier lilies, the bears use their long claws to dig up the bulbs and eat them.



15%
OFF




PANORAMA
MOUNTAIN RESORT

RidgeView is now the
official winter camping destination
for Panorama Ski Resort

RVR Members + Guests receive
15% discount on Panorama lift tickets!

Visit the front desk to receive your discount vouchers

*Get your turns
in now!!!!*
**Panorama closes
April 21st!**



SCAN ME